



CW520-01

- Green Laser Diode Module
- 515 nm, <1 mW
- Fix Focus Acryl Lens
- Automatic Power Control
- Wide Input Voltage Range (3-5 VDC)



Description

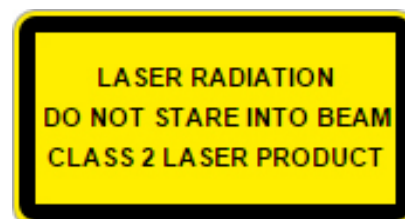
CW520-01 is a compact size fix collimated laser diode module with a typical emission wavelength of **515 nm**, and an optical output power of **<1 mW**. It features automatic power control (**APC**) driving electronics for stable operation, and supports a wide input voltage range (3-5 VDC). **CW520-01** comes equipped with a coaxial power connector. A matching **power supply** and suitable **heat sink** is optionally available for quick setup and convenient operation (see page 3 for details).

Maximum Ratings ($T_{CASE} = 25^{\circ}C$)

Parameter	Values		Unit
	Min.	Max.	
Operating temperature	+ 10	+ 50	°C
Storage temperature	- 20	+ 70	°C

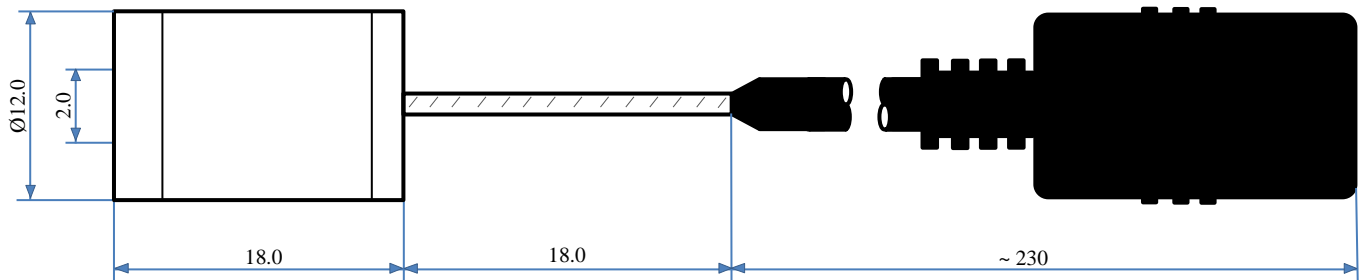
Electro-Optical Characteristics ($T_{CASE} = 25^{\circ}C$)

Parameter	Values			Unit
	Min.	Typ.	Max.	
Peak Wavelength	505	515	525	nm
Radiated Power			1	mW
Beam diameter at aperture		3		mm
Beam divergence		1.0		mrad
Operating Current			250	mA
Supply Voltage	3		5	VDC
Material body	brass			
Material lens	acryl			
Dimensions	Ø 12 x 18 (36)			mm
Connector	IEC 60130-10, Type A, 5.5/2.1 mm			
MTTF	3000			h





Outline Dimensions



all dimensions in mm

Electrical Connection

(IEC 60130-10, Type A, 5.5/2.1 mm)



Precautions

Static Electricity:

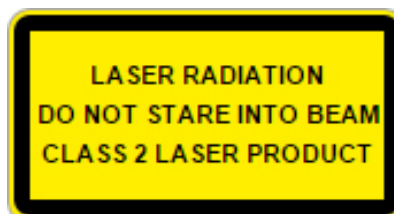
Precautions against electrostatic discharge (ESD) must be taken when handling or operating the module. Surge voltage or electrostatic discharge can result in complete failure of the laser diode.

Heat Sinking:

In order to maintain lifetime and stability of the laser diode it is essential to provide efficient heat management. For long time stable operation proper contact between laser module and heat sink is mandatory.

Safety:

This laser module emits highly concentrated visible light which can be **hazardous to the human eye and skin**. It is classified as **CLASS 2 laser product** according to **IEC 60825-1** and **21 CFR Part 1040.10 Safety Standards**. Actual laser light emitted and precautions necessary strongly depend on mode of operation.





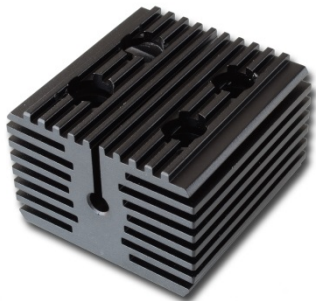
Accessories

Laser Power Supply LPS51



- 110-230 VAC universal input voltage
- Small ripple (<80 mV)
- AC Europlug (CEE7/16)
- ON/OFF switch
- IEC 60130-10 Type A connector
- Output: 5 VDC, max. 1 A

Heat Sink SQ50x34



- Aluminium, black anodized
- 50 x 50 x 34 mm
- 114 g
- Clamping mechanism

© All Rights Reserved

The above specifications are for reference purpose only and subjected to change without prior notice